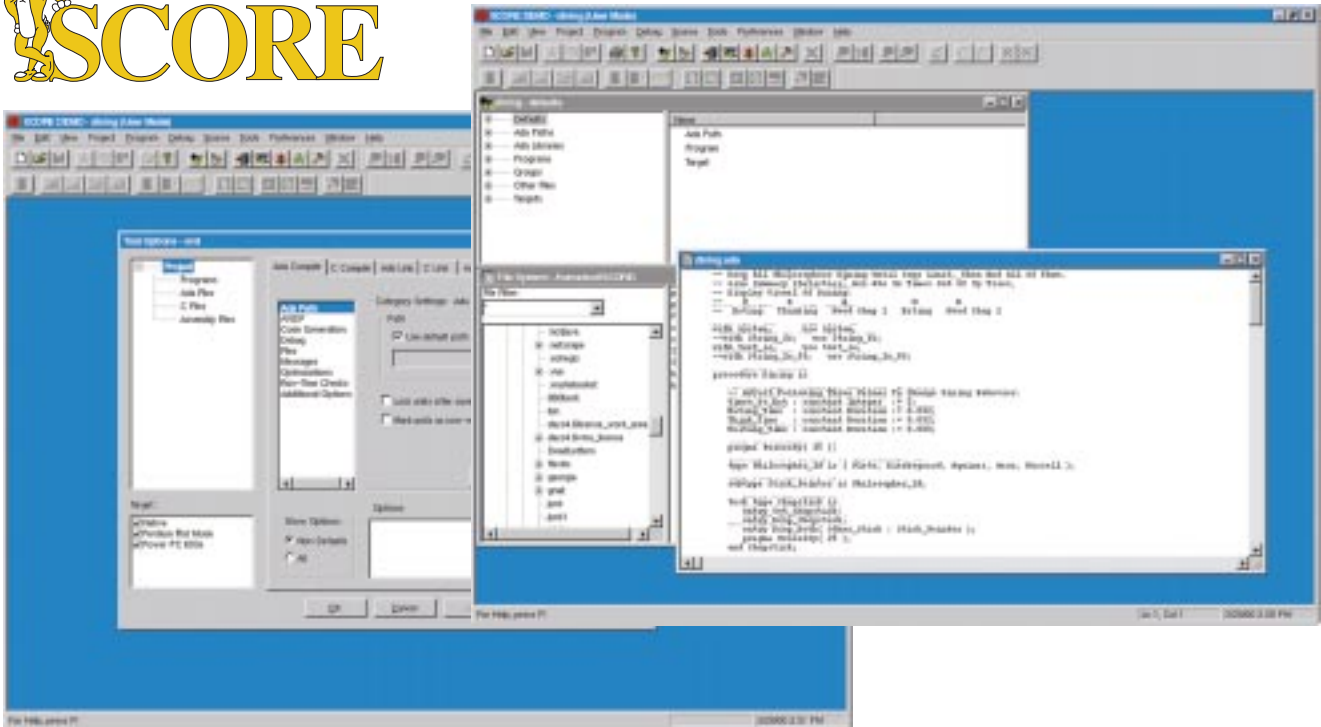




Graphical User Interface



Features

- Create projects to accommodate multiple users and programs
- Rebuild all programs in a project
- Set tool options settings at different levels or scopes
- Users can integrate preferred CM tools or editors
- Time stamped log of all commands
- Files can be associated from any visible disk or directory

Easy to Use GUI

SCORE (Safety Critical Object-oriented Real-time Embedded) provides an Ada 95 and C integrated development environment to make the various tools easy to use. One of the fundamental concepts of the GUI environment is the use of projects. A project serves as the organizing structure for all the source files, libraries, option settings and programs that are used together to develop an application. Creating a project allows you to:

- Specify an executable target on which to run your programs
- Add files to your project
- Add Ada or C programs to your project
- Add Ada libraries to your project
- Build part or all of your project
- Set and examine default compile options for Ada and C source files for your project
- Protect default tool options and other project attributes from inadvertent modification
- Share settings between multiple users

Other Services

DDC-I provides a full spectrum of consulting, training and support services. Each service is priced individually and is designed to help customers with complex applications achieve project goals on-time and on-budget.

DDC-I, Inc
400 N. 5th Street
Phoenix, AZ 85004
USA
Tel: (602) 275-7172
Fax: (602) 252-6054
<http://www.ddci.com>

DDC-I A/S
Gl. Lundtoftevej 1B
DK-2800 Lyngby
Denmark
Tel: +45 45 87 11 44
Fax: +45 45 87 22 17
<http://www.ddci.dk>

